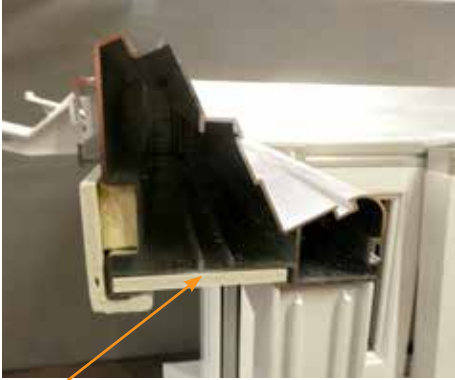


Installation Guide

Conservatory Tiled Roof System



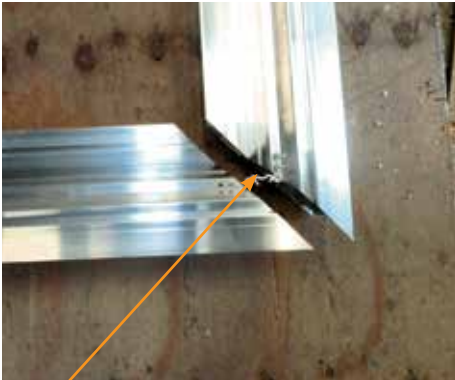
01. Identify the ring beam and make sure the 100mm soffit board is fitted before fitting ring beam on to window frames as this can not be fitted afterwards.



02. Fix front edge of ring beam in line with front face of windows so that no bare aluminium is showing.
For 60mm frame, fix same way but ring beam will overhang 10mm on inside of window frame. This will later be covered with insulation.



03. Corner cleats will be fitted at factory in to ring beam



04. Slide the next section of ring beam together in to corner cleat.



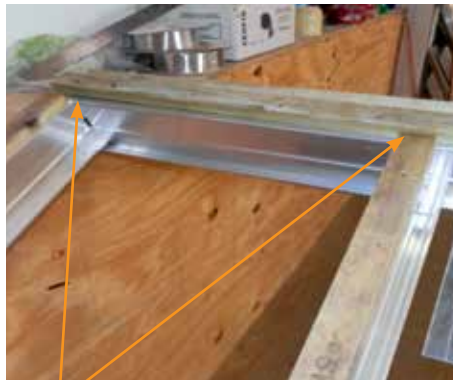
05. Fix using the screws provided.



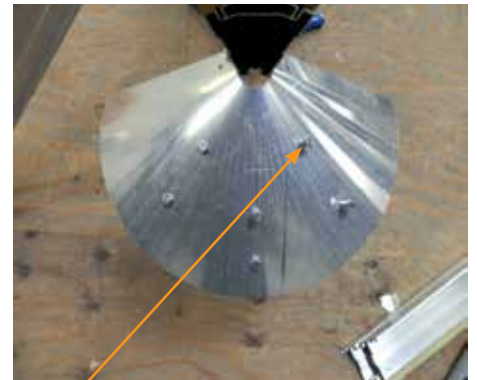
06. Fit facia board with poly pins on to timber batten.
Clip on gutter brackets and then fit gutter as it's easier to do so at this stage.



07. Fit all rafters and hips as you would do on a conventional conservatory roof.
See roof layout for rafter & hip positions.



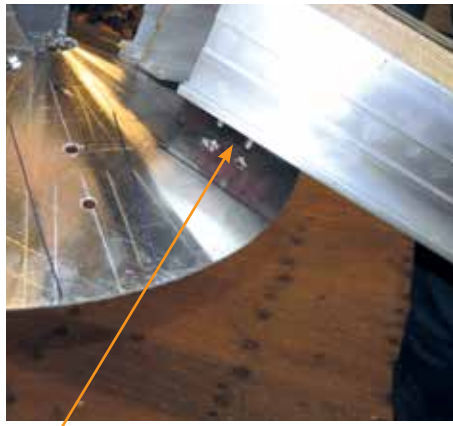
08. Once you have the rafters supporting the main body of the ridge start to slide all hip section on to ridge end plate using 13mm bolts supplied.



09. Ridge End Plate showing 13mm bolts located.



10.
Secure Hips into Ridge End Plate using 13mm bolts supplied.



11.
Followed by standard rafter again using 13mm bolts supplied.



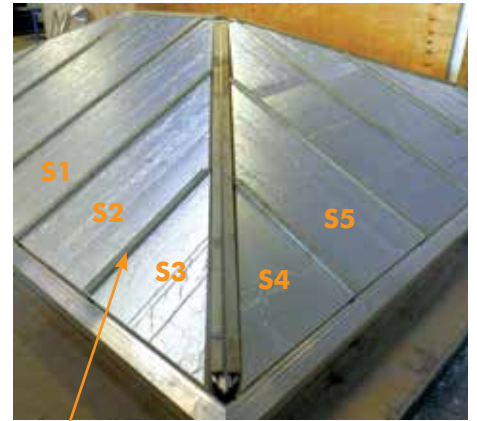
12.
Hip bar & standard rafter



13.
A typical jack rafter kit in place



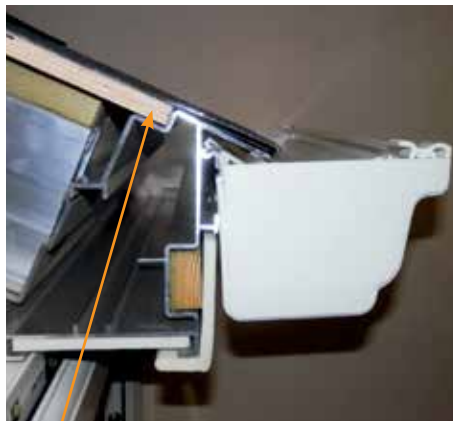
14.
Once all of the frame work of the roof is assembled, start work fitting 100mm insulation between rafter & hip.
These are all numbered, for example:- S1 / S2 / S3 / S4 / S5.



15.
Once all 100mm insulation is fitted, start to FIX and nail on plywood.



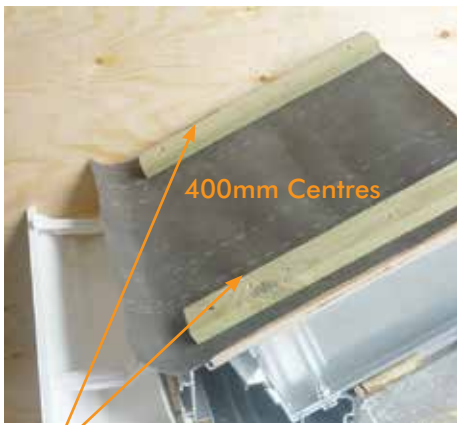
16.
Cover the entire roof with 12mm plywood, fixing at the same time with either nails or screws onto hips & rafters using a minimum 35mm nail or screw (not supplied).



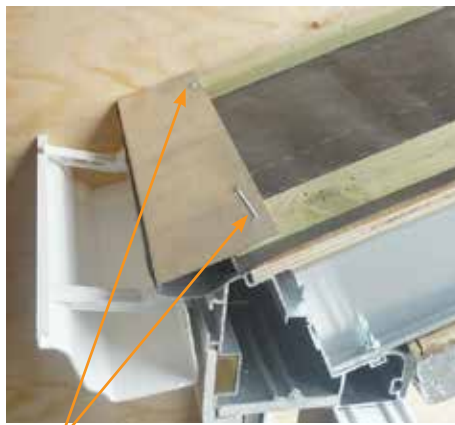
17.
Fix plywood in to bottom of ring beam with self drilling screws.



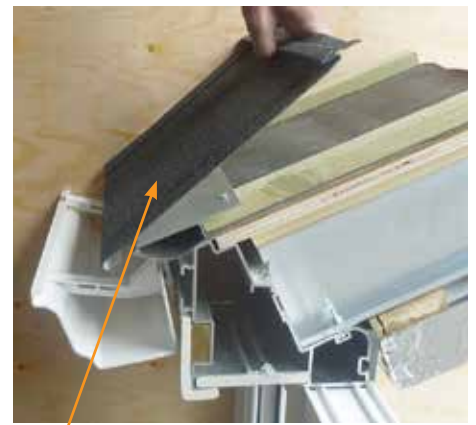
18.
Once the plywood is fitted, cover the roof with breathing felt. Ensure at least 50mm of felt runs in to the gutter, this can be trimmed back later.



19. Batten out roof as shown at approx. 400mm centres. Ensure you batten each side of Hips & Ridge. Join battens where necessary, there is no need to use full lengths.



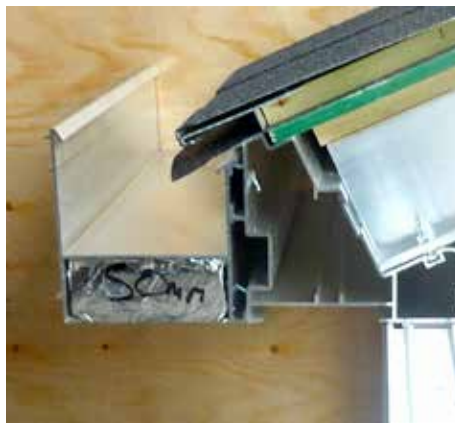
20. Once the roof is completely battened out for the NEW Tile Starter Cleat at the bottom of the Batten/Ring Beam as in photo. Use 38mm Self Tapping Screws to fix into batten in order to secure the tile starter cleat. Ensure the tiles are sufficiently over hanging the gutter.



21. Fix tiles as shown and ensure you do not trap the breathable membrane between the tile and tile cleat.



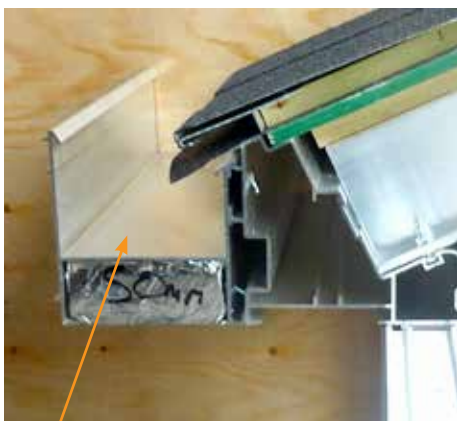
22. Apply 60mm foam to up stand of ring beam prior to installing plasterboards as shown.



23. Box gutter make up showing 50mm PIR insulation in place to underside of box gutter.



24. Fix timber batten on for ridge & hip.



25. Box gutter detail: Fit to house wall or fascia and lead flash on to box gutter.

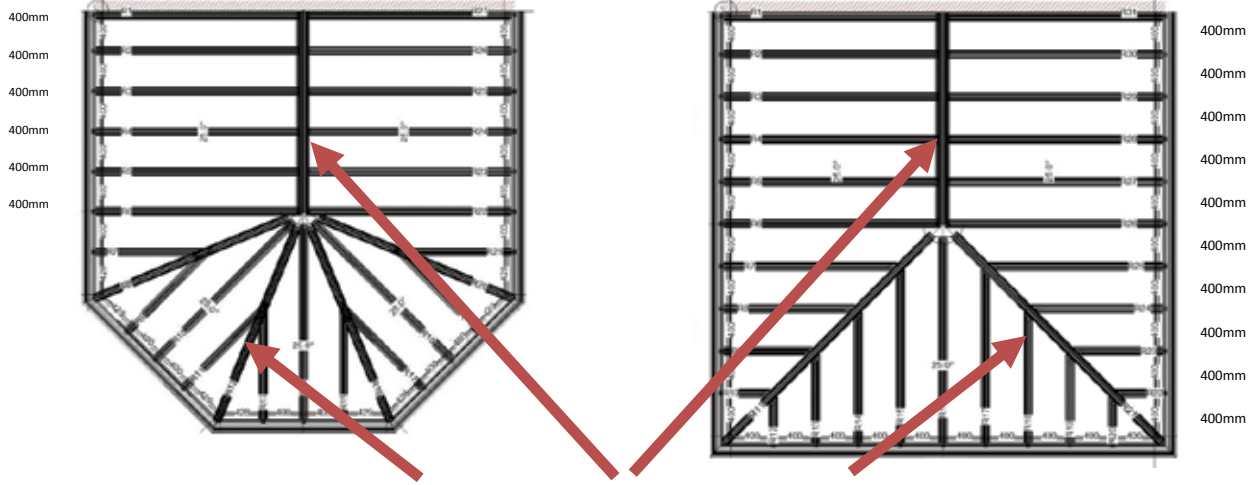


26. Optional Extra Vertical Corner Mullion Support (where needed).



27. Optional Extra Vertical Mullion Supports (where needed).

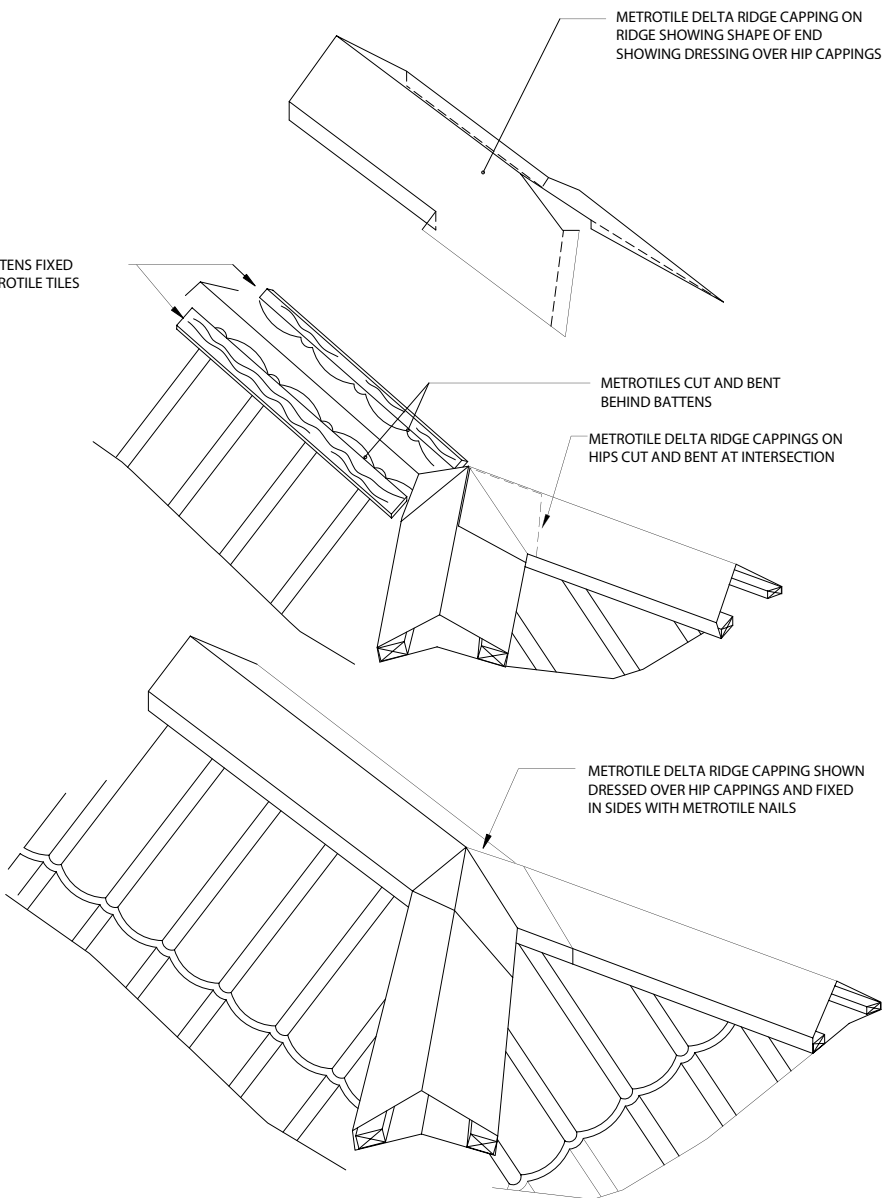
Typical Batten Configuration



Ensure you batten each side of the Hip & Ridge

Ridge Detail if unable to use 3 & 5 Way Jointers

50x25 BATTENS FIXED OVER METROTILE TILES



Ancillary Components



2 Part Barge for lean to ends or gable fronts barge. Also Soaker tray for under tile.



Hip & Ridge Cover



Colour Matching Repair Kit



5 Way Ridge joint cover for standard 3 segment Victorian & 135° hip end cap.



3 Way Y joint for standard Edwardian & 90° hip end cap.